

---

## Comparison Of Number Of Teeth Lost In Periodontitis And Dental Caries In Age Group Of 30-60 Years.

---

RACHEL PAUL<sup>1</sup>, JAIGANESH RAMAMURTHY<sup>2\*</sup>, DEEPA GURUNATHAN<sup>3</sup>

<sup>1</sup>Saveetha Dental college & Hospitals, Saveetha Institute of Medical and technical Sciences, Saveetha University, Chennai

<sup>2</sup>Professor and Head, Department of Periodontics, Saveetha Dental college & Hospitals, Saveetha Institute of Medical and Technical Sciences, Saveetha University, Chennai

<sup>3</sup>Professor and Head, Department of pedodontics, Saveetha Dental college & Hospitals, Saveetha Institute of Medical and Technical Sciences, Saveetha University, Chennai

\*Corresponding author:

Email :151601044.sdc@saveetha.com<sup>1</sup>, jaiganeshr@saveetha.com<sup>2</sup>, Deepag@saveetha.com<sup>3</sup>

---

**Abstract:** Tooth loss can have profound effects on the individual hence the prevention and treatment of the etiology of tooth loss is very important. The aim of the study is to compare the number of teeth lost due to periodontitis and dental caries in the age group of 30-60 years of age. Data was reviewed and analysis of the data of 110 patients were done. The data collected was from patients visiting the OP department, the data was then tabulated and statistical analysis was done in SPSS statistical analysis by IBM and the results were obtained. Out of 110 patients that were studied, 54.54% were female subjects and 45.45% were male subjects. The most common reason for extraction was found to be due to dental caries. The overall age group that underwent tooth extraction were 32-48 years with a gender predilection of females. Awareness programs must be initiated for various oral hygiene maintenance focusing on the prevention and the treatment of oral diseases.

**Keywords:** Tooth loss; Periodontal disease; Periodontitis; Dental Caries; Inflammation

---

### INTRODUCTION:

Tooth loss is a multifactorial process which involves factors such as dental caries; periodontal disease; and a variety of socio-environmental factors such as socio-economic status (SES), educational levels, access to care, and insurance status; and general health status etc. The most common cause of tooth loss is due to Periodontal disease and Dental Caries. These two diseases are caused by microorganisms present in the oral cavity. Soft deposits form on the tooth surface are termed as dental plaque.

Periodontal disease is a chronic inflammatory disease of the periodontium and the advanced form is characterized by the loss of periodontal ligament and destruction of the surrounding alveolar bone (1) which is the main cause of tooth loss and is considered as one of the two biggest threats to oral health. (2), (3) There are approximately 800 species of bacteria identified in the oral cavity (4) and some of the species are commensals and have symbiotic relationship with the host. They are mostly gram positive aerobic bacteria. When they accumulate below the sulcus in the form of biofilm they tend to grow as communities. As more and more organisms colonize, oxygen deprivation occurs and paves the way for the growth of anaerobic organisms like *Porphyromonas gingivalis*, *A. actinomycetem comitans*. These organisms release toxins and modify the immune response of the host causing destruction of our own tissues. This destruction leads to attachment loss and bone loss leading to periodontal disease. Periodontal disease is the most common oral condition of the human population secondary to dental caries. The prevalence and incidence statistics of periodontal diseases in different parts of the world vary because of bias, case misclassification, and the number of teeth and the sites examined. (5) Periodontal treatment aims at restoring the lost structures by regeneration and in cases where its not possible repair is done. Attachment loss in the form of gingival recession can be managed by gingival augmentation procedure and root coverage procedures like Coronally advanced flap (CAF). CAF is a predictable treatment for isolated Miller's class I and II recession defects. Some researchers used Platelet Rich Fibrin (PRF) along with root coverage procedures for effective regeneration. The addition of PRF to CAF provided no added advantage in terms of root coverage except for an increase in GTH. (6)

Dental caries is the most prevalent chronic disease worldwide. It's an infectious disease characterized by a multifactorial etiology and slow evolution that leads to the destruction of dental hard tissues. The risk factors for dental caries can be classified into biological, socio- behavioral and economical. Socioeconomic factors such as income, literacy level and number of family members impact the disease incidence. Many other factors such as dietary factors, oral hygiene practices and frequency of dental visit play a role as well. (7) It is well established that saliva plays an important role in the health of soft and hard tissues in the oral cavity. The early stages of this

disease are reversible by the elimination of etiological factors (such as plaque biofilm and diet) and increasing protective factors (such as fluoride exposure and salivary flow). Our team has rich experience in research and we have collaborated with numerous authors over various topics in the past decade (8–31)

The implementation of preventive measures, the need to invest in the education for the correct oral hygiene practices of oral health, associated with preventive and continuous medical and dental care, are key to the awareness of populations of its existence and to the decline of its prevalence (32).

#### **MATERIALS AND METHODS:**

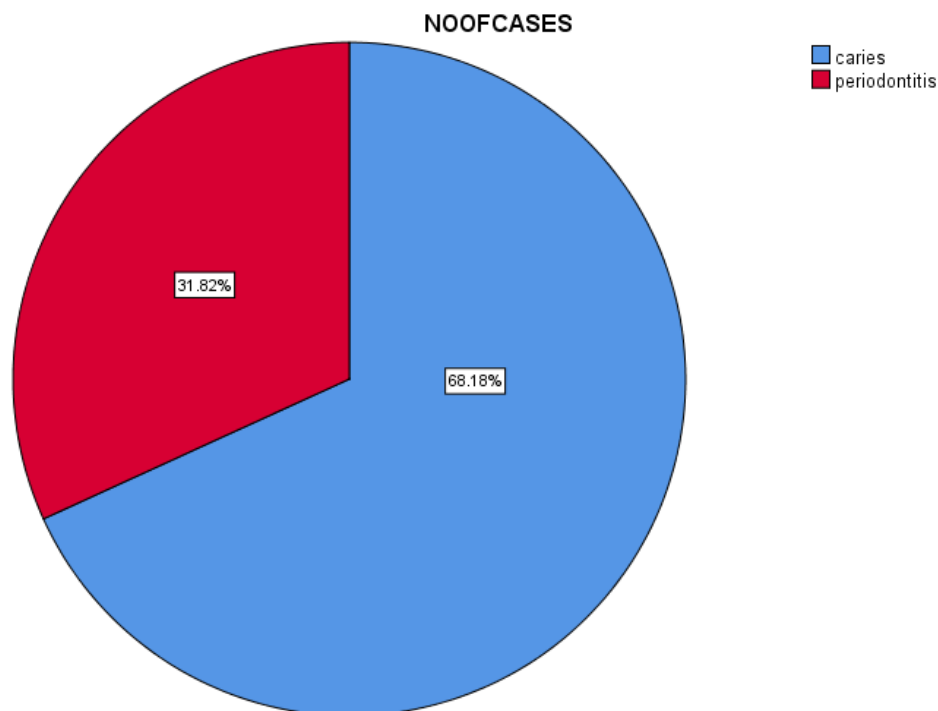
This study was done in a university setting i.e. patients visiting the OP department. The pros being the data availability and similar ethnicity and the cons being that the data is not location specific. The data obtained was from the institution and scientific review board. There are three people involved in the research namely the researcher, the reviewer and the guide. The data was collected from a particular time period which was June 2019 to March 2020. Cross verification of the data was done by photographs. Inclusion of all data was all done to reduce minimise sampling bias. Internal validity present by excluding confounding factors. External validity results can be applied to practical situations. A study sample of 110 cases were included in this study.

Data collection and tabulation- data collection was done by Dental Information Archiving Software- periodontitis- treatment report- no of teeth lost and dental caries. Censored and incomplete data, patients with healthy gingiva, pregnant or breastfeeding, drugs influencing gingival inflammation were excluded from the study.

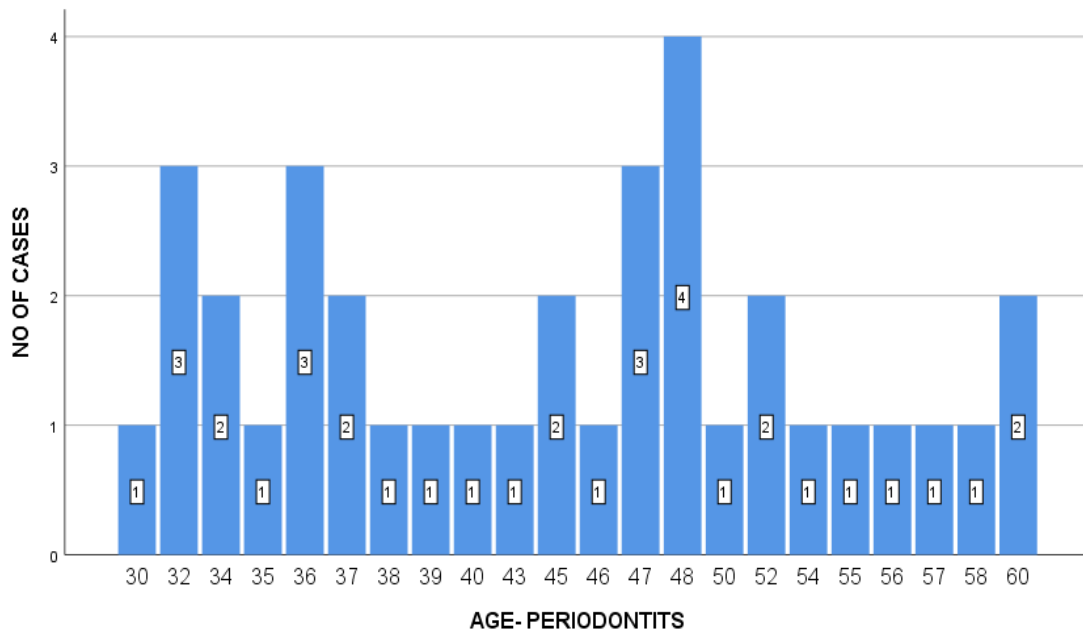
The statistical analysis used was chi square test and the statistical analysis used was SPSS by IBM. The list of independent variables includes tooth number and the dependent variable includes age and gender. The type of analysis done was correlation and association.

#### **RESULTS AND DISCUSSION:**

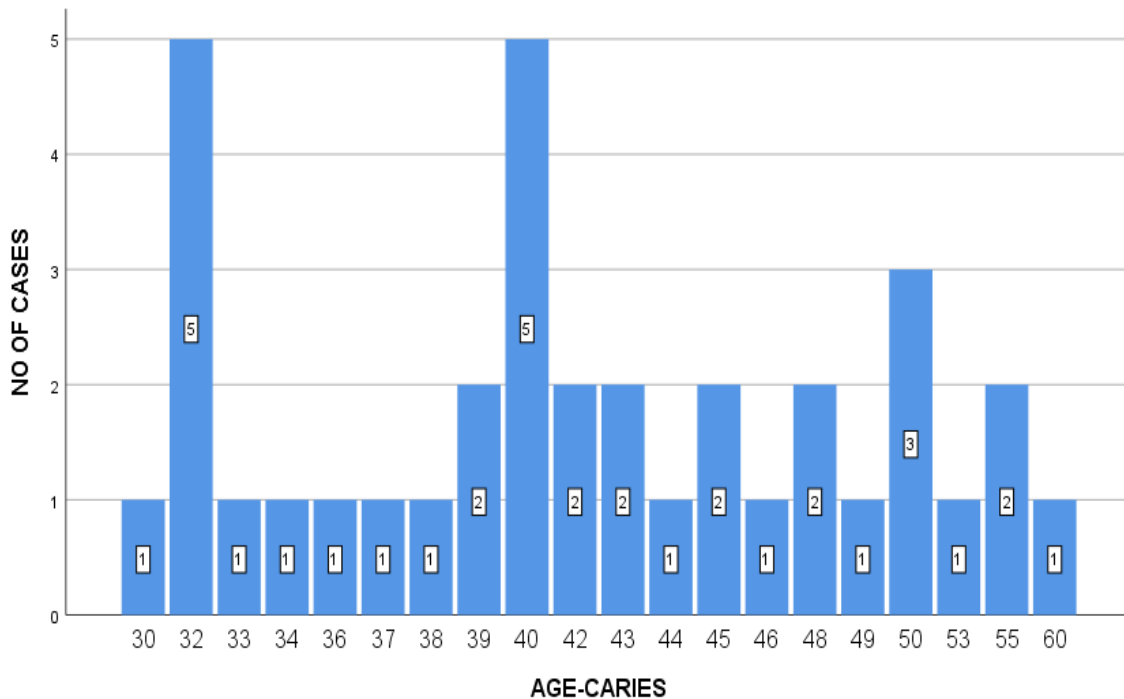
A total of 110 cases were collected and tabulated. Out of which 68.2 % of the extractions were due to dental caries and 31.82% were found to be due to Periodontitis (figure 1). The most common age group that underwent extractions due to periodontitis was 48 years of age ( figure 2) and the common age group that underwent extractions due to dental caries were 32 and 40 years of age (figure 3). The highest frequency of extractions due to periodontitis were among male subjects for dental caries (figure 4) and female subjects for periodontitis (figure 5).



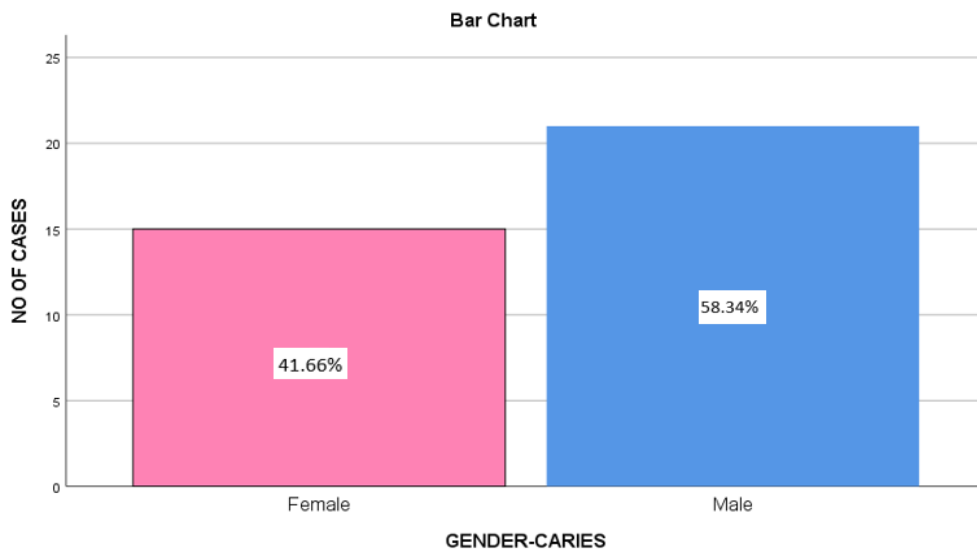
**Fig.1: Pie chart represents the number of cases of tooth loss due to periodontitis and caries showing higher frequency of extractions due to dental caries compared to periodontitis. The percentage of extraction due to caries was 68.2% (blue colour) and that of periodontitis was 31.8%. ( red colour) chi square test, p value=0.001, <0.5 statistically significant).**



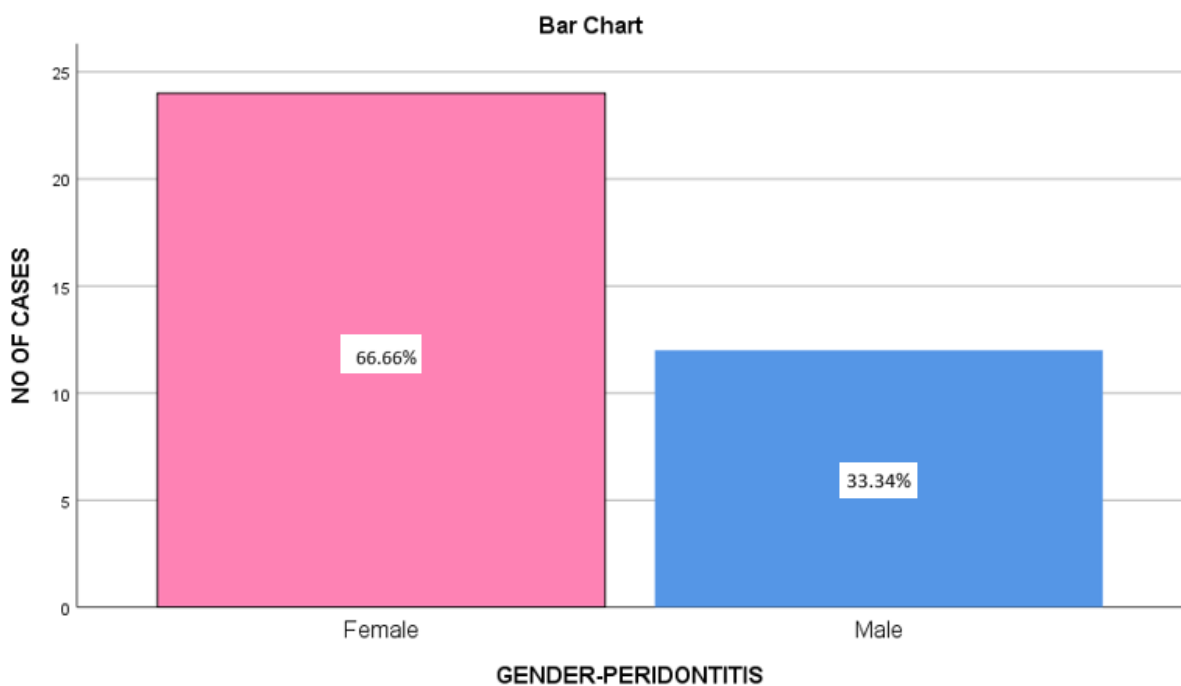
**Fig.2 :** Graph represents the number of cases of tooth lost due to periodontitis based on age. The x axis represents the age of the patients and the Y axis represents the number of patients. The most common age group that underwent extractions due to periodontitis was 48 years of age.



**Fig.3:** Graph represents the no of cases of tooth lost due to caries based on age of the patient. The x axis represents the age of the patients from 30 to 60 years and the Y axis represents the number of patients. The most common age group seen for extractions due to dental caries were found to be 32 and 40 years of age.



**Fig.4 :** Graph shows the number of cases of tooth lost due to caries based on gender. The x axis represents the gender of the patients and the Y axis represents the number of patients. Male subjects shown as blue colour in the graph were subjected to more extractions ( Chi square test was done, P value- 0.425 <0.5 significant) compared to female subjects shown as pink colour in the graph. The frequency of males subjects was found to be 58.3 %.



**Fig.5 :** Graph represents the number of cases of tooth lost due to periodontitis based on gender. The x axis represents the gender of the patients and the Y axis represents the number of patients. Extractions due to periodontitis were seen more commonly in female subjects (66.66%) ( Chi square test was done, P value- 0.356 <0.5 significant) shown as pink colour in the graph than male subjects shown as blue colour in the graph.

The mouth is a mirror of the health of the body. Maintenance of a good oral health represents a being free from pain in the oral and facial region; absence of oral sores and lesions; free from periodontal diseases, dental caries, tooth loss, and many other abnormalities that affect oral cavity. Oral health is considered as an important factor of public health, and oral diseases are among the preventable non spreadable diseases (33)

Gingivitis is the mild form whereas periodontitis is an irreversible loss of supporting structures of the teeth. Though periodontal pathogens form a important component in the etiopathogenesis of periodontitis, there is a strong evidence suggesting that oxidative stress play a major role in the disease initiation and progression. (34) Periodontitis is nothing but a chronic bacterial infection characterized by persistent inflammation, connective tissue breakdown and alveolar bone destruction mediated by pro-inflammatory mediators. (35) Aggressive periodontitis which is the most severe form of periodontal disease affects an individual at an early age. (36)

Once these tissues are lost, the primary goal of periodontal therapy is to regenerate the diseased tissues lost, approximately to their original form, architecture, and function. (37) it is found that Hiora and Chlorhexidine mouthwashes are equally effective in the treatment of gingivitis (38) Growth factors can prolong their activity for quite a longer period and can stimulate tissue regeneration effectively. (39), (40) Interleukin-21 (IL-21) has been associated with systemic diseases such as rheumatoid arthritis and Crohn's disease which follow a chronic inflammatory cascade. Similarly recent studies have associated Interleukin-21 levels with periodontitis. (41) A study conducted in Saveetha dental College concluded Serum ET-1 is increased in chronic periodontitis and reduces after periodontal therapy. Further studies are required to establish ET-1 as a biomarker for periodontal disease. (42), (43) similarly, The salivary  $\beta$  Glucuronidase level was higher in Diabetic patients with periodontitis than nondiabetic periodontitis patients. (44) Some evidence suggests that periodontopathogens play a role in causing respiratory infections (45) Periodontitis and atherosclerosis represent a chronic inflammatory process. (46)

Advanced diagnostic images such as CBCT should be strongly recommended in evaluating the position of IAN preoperatively before advanced implant surgical techniques, nerve repositioning, and any other surgical procedures (47) Farista et al. observed that a combination of laser-assisted crown lengthening with lip-repositioning surgery where gingival contouring was done to correct the gingival asymmetry showed satisfactory esthetic outcome only at 6-month follow-up, but there was a mild recurrence at the 1-year follow-up. (48)

The total number of populations that were studied were 110 out of which 54.54% were females and 45.45% were males. The most common reason for tooth loss were dental caries compared to periodontitis. The most common age group that underwent tooth extraction were 32-48 years overall with a gender predilection of females. The most common age group in periodontitis- 48 years. The risk of periodontal disease increases with the advancing age that is why the high prevalence of periodontal disease is seen among elderly population. (49) Research identified that age is associated with periodontal disease, and clinical AL was significantly higher among individuals aged 60-69 years compared with groups of adults 40-50 years. (50)

The most common gender that underwent tooth extraction due to periodontitis were females. The reason being hormonal changes in women increase the likelihood of periodontal disease. Females may experience gingival inflammation before menstruation and during ovulation due to a high level of progesterone which blocks the repair of collagen fibers and causes the dilation of blood vessels. Similarly, pregnant women most frequently exhibit gingival changes, gingivitis, and sometimes localized growth of gingival tissues. (51)

The most common gender in tooth loss due to dental caries were found to be males. According to previous international findings, women tend to have a higher DMFT index than men. (52) This is due to a complex aetiology, including hormonal fluctuations, genetic variations, different saliva composition and flow rate, dietary habits, and social roles in the family. (53) The most common age group that was found to be higher was 32 years of age. Our institution is passionate about high quality evidence based research and has excelled in various fields ((13,54-59) This study results can be supported by a study conducted in India in 2004 13- A very extensive and comprehensive National Health Survey was conducted in 2004 throughout the entire country of India in order to ascertain the oral health status and prevalence of dental disease in representative age groups. The following percent prevalence of dental caries was reported for the various age groups examined, for both coronal and root surfaces: 51.9% in 5 year-old children 53.8% in 12 year-old children 63.1% in 15 year-old teenagers 80.2% in adults aged 35-44 years-old (60).

## CONCLUSION:

Tooth loss can have a profound effect on the quality of life of older individuals by restricting food choices, impairing chewing ability, affecting speech, limiting social interaction and lowering the self-esteem of the individual. Our study concludes that the majority of patients who had tooth loss was due to dental caries compared to periodontal disease. Hence more awareness programmes required to motivate patients to maintain oral hygiene to prevent tooth loss.

### CONFLICT OF INTEREST:

The authors would like to declare that there is no conflict of interest among the authors.

### ACKNOWLEDGEMENT:

The authors would like to acknowledge the Chancellor, Director of Academics, The Principal, Associate Dean of Research, The Vice Chancellor of Saveetha University. HOD and their Professors, Readers, Lecturers and their fellow Postgraduates, Department of Periodontics and Department of Pedodontic and Preventive Dentistry, Saveetha University, The support from their parents and from their family.

### REFERENCES:

1. Ahluwalia KP, Sadowsky D. Oral disease burden and dental services utilization by Latino and African-American seniors in Northern Manhattan. *J Community Health*. 2003 Aug;28(4):267–80.
2. Pablo P de, de Pablo P, Chapple ILC, Buckley CD, Dietrich T. Periodontitis in systemic rheumatic diseases [Internet]. Vol. 5, *Nature Reviews Rheumatology*. 2009. p. 218–24. Available from: <http://dx.doi.org/10.1038/nrrheum.2009.28>
3. Benjamin RM. Oral health: the silent epidemic. *Public Health Rep*. 2010 Mar;125(2):158–9.
4. Ashby MT, Kreth J, Soundarajan M, Sivuilu LS. Influence of a model human defensive peroxidase system on oral streptococcal antagonism. *Microbiology*. 2009 Nov;155(Pt 11):3691–700.
5. Toppila-Salmi S, Julkunen-Iivari A, Luukkainen A, Vento S, Apajalahti S, Saat R, et al. Radiologic periodontal findings in paranasal sinus computed tomography scans of chronic rhinosinusitis patients. 2020; Available from: [https://www.rhinologyonline.org/Rhinology\\_online\\_issues/manuscript\\_69.pdf](https://www.rhinologyonline.org/Rhinology_online_issues/manuscript_69.pdf)
6. Thamaraiselvan M, Elavarasu S, Thangakumaran S, Gadagi JS, Arthie T. Comparative clinical evaluation of coronally advanced flap with or without platelet rich fibrin membrane in the treatment of isolated gingival recession. *J Indian Soc Periodontol*. 2015 Jan;19(1):66–71.
7. Elamin A, Garemo M, Gardner A. Dental caries and their association with socioeconomic characteristics, oral hygiene practices and eating habits among preschool children in Abu Dhabi, United Arab Emirates — the NOPLAS project [Internet]. Vol. 18, *BMC Oral Health*. 2018. Available from: <http://dx.doi.org/10.1186/s12903-018-0557-8>
8. Rajeshkumar S, Menon S, Venkat Kumar S, Tambuwala MM, Bakshi HA, Mehta M, et al. Antibacterial and antioxidant potential of biosynthesized copper nanoparticles mediated through *Cissus arnotiana* plant extract. *J Photochem Photobiol B*. 2019 Aug;197:111531.
9. Gomathi AC, Xavier Rajarathinam SR, Mohammed Sadiq A, Rajeshkumar S. Anticancer activity of silver nanoparticles synthesized using aqueous fruit shell extract of *Tamarindus indica* on MCF-7 human breast cancer cell line [Internet]. Vol. 55, *Journal of Drug Delivery Science and Technology*. 2020. p. 101376. Available from: <http://dx.doi.org/10.1016/j.jddst.2019.101376>
10. Panchal V, Jeevanandan G, Subramanian EMG. Comparison of post-operative pain after root canal instrumentation with hand K-files, H-files and rotary Kedo-S files in primary teeth: a randomised clinical trial. *Eur Arch Paediatr Dent*. 2019 Oct;20(5):467–72.
11. Dua K, Wadhwa R, Singhvi G, Rapalli V, Shukla SD, Shastri MD, et al. The potential of siRNA based drug delivery in respiratory disorders: Recent advances and progress. *Drug Dev Res*. 2019 Sep;80(6):714–30.
12. Ramakrishnan M, Dhanalakshmi R, Subramanian EMG. Survival rate of different fixed posterior space maintainers used in Paediatric Dentistry - A systematic review. *Saudi Dent J*. 2019 Apr;31(2):165–72.
13. Ezhilarasan D, Apoorva VS, Ashok Vardhan N. *Syzygium cumini* extract induced reactive oxygen species-mediated apoptosis in human oral squamous carcinoma cells. *J Oral Pathol Med*. 2019 Feb;48(2):115–21.
14. Duraisamy R, Krishnan CS, Ramasubramanian H, Sampathkumar J, Mariappan S, Navarasampatti Sivaprakasam A. Compatibility of Nonoriginal Abutments With Implants: Evaluation of Microgap at the Implant-Abutment Interface, With Original and Nonoriginal Abutments. *Implant Dent*. 2019 Jun;28(3):289–95.
15. Rajeshkumar S, Kumar SV, Ramaiah A, Agarwal H, Lakshmi T, Roopan SM. Biosynthesis of zinc oxide nanoparticles using *Mangifera indica* leaves and evaluation of their antioxidant and cytotoxic properties in lung cancer (A549) cells. *Enzyme Microb Technol*. 2018 Oct;117:91–5.
16. Varghese SS, Ramesh A, Veeraiyan DN. Blended Module-Based Teaching in Biostatistics and Research Methodology: A Retrospective Study with Postgraduate Dental Students. *J Dent Educ*. 2019 Apr;83(4):445–50.
17. Deogade S, Gupta P, Ariga P. Effect of monopoly-coating agent on the surface roughness of a tissue conditioner subjected to cleansing and disinfection: A Contact Profilometric In vitro study [Internet]. Vol. 9, *Contemporary Clinical Dentistry*. 2018. p. 122. Available from: [http://dx.doi.org/10.4103/ccd.ccd\\_112\\_18](http://dx.doi.org/10.4103/ccd.ccd_112_18)
18. Ezhilarasan D. Oxidative stress is bane in chronic liver diseases: Clinical and experimental perspective.

- Arab J Gastroenterol. 2018 Jun;19(2):56–64.
19. Ezhilarasan D, Sokal E, Najimi M. Hepatic fibrosis: It is time to go with hepatic stellate cell-specific therapeutic targets. *Hepatobiliary Pancreat Dis Int.* 2018 Jun;17(3):192–7.
  20. Samuel SR, Acharya S, Rao JC. School Interventions-based Prevention of Early-Childhood Caries among 3-5-year-old children from very low socioeconomic status: Two-year randomized trial. *J Public Health Dent.* 2020 Jan;80(1):51–60.
  21. Mehta M, Deeksha, Tewari D, Gupta G, Awasthi R, Singh H, et al. Oligonucleotide therapy: An emerging focus area for drug delivery in chronic inflammatory respiratory diseases. *Chem Biol Interact.* 2019 Aug 1;308:206–15.
  22. J PC, Marimuthu T, C K, Devadoss P, Kumar SM. Prevalence and measurement of anterior loop of the mandibular canal using CBCT: A cross sectional study. *Clin Implant Dent Relat Res.* 2018 Aug;20(4):531–4.
  23. Sharma P, Mehta M, Dhanjal DS, Kaur S, Gupta G, Singh H, et al. Emerging trends in the novel drug delivery approaches for the treatment of lung cancer. *Chem Biol Interact.* 2019 Aug 25;309:108720.
  24. Malli Sureshbabu N, Selvarasu K, V JK, Nandakumar M, Selvam D. Concentrated Growth Factors as an Ingenious Biomaterial in Regeneration of Bony Defects after Periapical Surgery: A Report of Two Cases. *Case Rep Dent.* 2019 Jan 22;2019:7046203.
  25. Rajendran R, Kunjusankaran RN, Sandhya R, Anilkumar A, Santhosh R, Patil SR. Comparative Evaluation of Remineralizing Potential of a Paste Containing Bioactive Glass and a Topical Cream Containing Casein Phosphopeptide-Amorphous Calcium Phosphate: An In Vitro Study [Internet]. Vol. 19, *Pesquisa Brasileira em Odontopediatria e Clínica Integrada.* 2019. p. 1–10. Available from: <http://dx.doi.org/10.4034/pboci.2019.191.61>
  26. Jeevanandan G, Govindaraju L. Clinical comparison of Kedo-S paediatric rotary files vs manual instrumentation for root canal preparation in primary molars: a double blinded randomised clinical trial [Internet]. Vol. 19, *European Archives of Paediatric Dentistry.* 2018. p. 273–8. Available from: <http://dx.doi.org/10.1007/s40368-018-0356-6>
  27. Menon S, Ks SD, Santhiya R, Rajeshkumar S, S VK. Selenium nanoparticles: A potent chemotherapeutic agent and an elucidation of its mechanism [Internet]. Vol. 170, *Colloids and Surfaces B: Biointerfaces.* 2018. p. 280–92. Available from: <http://dx.doi.org/10.1016/j.colsurfb.2018.06.006>
  28. Vishnu Prasad S, Kumar M, Ramakrishnan M, Ravikumar D. Report on oral health status and treatment needs of 5-15 years old children with sensory deficits in Chennai, India. *Spec Care Dentist.* 2018 Jan;38(1):58–9.
  29. Wahab PUA, Madhulaxmi M, Senthilnathan P, Muthusekhar MR, Vohra Y, Abhinav RP. Scalpel Versus Diathermy in Wound Healing After Mucosal Incisions: A Split-Mouth Study. *J Oral Maxillofac Surg.* 2018 Jun;76(6):1160–4.
  30. Prabakar J, John J, Arumugham IM, Kumar RP, Srisakthi D. Comparative Evaluation of Retention, Cariostatic Effect and Discoloration of Conventional and Hydrophilic Sealants - A Single Blinded Randomized Split Mouth Clinical Trial. *Contemp Clin Dent.* 2018 Sep;9(Suppl 2):S233–9.
  31. Gheena S, Ezhilarasan D. Syringic acid triggers reactive oxygen species-mediated cytotoxicity in HepG2 cells. *Hum Exp Toxicol.* 2019 Jun;38(6):694–702.
  32. Veiga N, Aires D, Douglas F, Others. Dental caries: A review. *Journal of Dental and Oral Health.* 2016;3(1):2.
  33. Athuluru D, Chandrasekhara Reddy V, Sudhir KM, Krishna RV, Gomasani S, Nagarakanti S. An epidemiological data of oral health status and treatment needs of rural population of Nellore district, Andhra Pradesh, India. *Journal of Indian Association of Public Health Dentistry.* 2016 Jul 1;14(3):281.
  34. Ramesh A, Varghese SS, Doraiswamy JN, Malaiappan S. Herbs as an antioxidant arsenal for periodontal diseases. *J Intercult Ethnopharmacol.* 2016 Jan;5(1):92–6.
  35. Varghese SS, Thomas H, Jayakumar ND, Sankari M, Lakshmanan R. Estimation of salivary tumor necrosis factor-alpha in chronic and aggressive periodontitis patients. *Contemp Clin Dent.* 2015 Sep;6(Suppl 1):S152–6.
  36. Ramesh A, Ravi S, Kaarthikeyan G. Comprehensive rehabilitation using dental implants in generalized aggressive periodontitis. *J Indian Soc Periodontol.* 2017 Mar;21(2):160–3.
  37. Avinash K, Malaiappan S, Dooraiswamy JN. Methods of Isolation and Characterization of Stem Cells from Different Regions of Oral Cavity Using Markers: A Systematic Review. *Int J Stem Cells.* 2017 May 30;10(1):12–20.
  38. Ramamurthy J, Mg V. COMPARISON OF EFFECT OF HIORA MOUTHWASH VERSUS CHLORHEXIDINE MOUTHWASH IN GINGIVITIS PATIENTS: A CLINICAL TRIAL. *Asian J Pharm Clin Res.* 2018;11(7):84–8.
  39. Panda S, Jayakumar ND, Sankari M, Varghese SS, Kumar DS. Platelet rich fibrin and xenograft in treatment of intrabony defect. *Contemp Clin Dent.* 2014 Oct;5(4):550–4.

40. Ravi S, Malaiappan S, Varghese S, Jayakumar ND, Prakasam G. Additive Effect of Plasma Rich in Growth Factors With Guided Tissue Regeneration in Treatment of Intrabony Defects in Patients With Chronic Periodontitis: A Split-Mouth Randomized Controlled Clinical Trial [Internet]. Vol. 88, Journal of Periodontology. 2017. p. 839–45. Available from: <http://dx.doi.org/10.1902/jop.2017.160824>
41. Mootha A, Malaiappan S, Jayakumar ND, Varghese SS, Toby Thomas J. The Effect of Periodontitis on Expression of Interleukin-21: A Systematic Review. *Int J Inflam*. 2016 Feb 22;2016:3507503.
42. Khalid W, Varghese SS, Sankari M, Jayakumar ND. Comparison of Serum Levels of Endothelin-1 in Chronic Periodontitis Patients Before and After Treatment. *J Clin Diagn Res*. 2017 Apr;11(4):ZC78–81.
43. Khalid W, Varghese SS, Lakshmanan R, Sankari M, Jayakumar ND. Role of endothelin-1 in periodontal diseases: A structured review. *Indian J Dent Res*. 2016 May;27(3):323–33.
44. Ramamurthy J, Nd J, Varghese S. Comparison of Salivary Beta Glucuronidase Activity in Chronic Periodontitis Patients with and without Diabetes Mellitus. *J Clin Diagn Res*. 2014 Jun;8(6):ZC19–21.
45. Ramesh A, Varghese SS, Jayakumar ND, Malaiappan S. Chronic obstructive pulmonary disease and periodontitis--unwinding their linking mechanisms. *J Oral Biosci*. 2016;58(1):23–6.
46. Priyanka S, Kaarthikeyan G, Nadathur JD, Mohanraj A, Kavarthapu A. Detection of cytomegalovirus, Epstein-Barr virus, and Torque Teno virus in subgingival and atheromatous plaques of cardiac patients with chronic periodontitis. *J Indian Soc Periodontol*. 2017 Nov;21(6):456–60.
47. Kavarthapu A, Thamaraiselvan M. Assessing the variation in course and position of inferior alveolar nerve among south Indian population: A cone beam computed tomographic study. *Indian J Dent Res*. 2018 Jul;29(4):405–9.
48. Ramesh A, Vellayappan R, Ravi S, Gurumoorthy K. Esthetic lip repositioning: A cosmetic approach for correction of gummy smile - A case series. *J Indian Soc Periodontol*. 2019 May;23(3):290–4.
49. Grodstein F, Colditz GA, Stampfer MJ. Post-menopausal hormone use and tooth loss: a prospective study. *J Am Dent Assoc*. 1996 Mar;127(3):370–7, quiz 392.
50. Rhee G-B, Ji S, Ryu J-J, Lee J-B, Shin C, Lee JY, et al. Risk assessment for clinical attachment loss of periodontal tissue in Korean adults. *J Adv Prosthodont*. 2011 Mar;3(1):25–32.
51. Markou E, Boura E, Tsalikis L, Deligianidis A, Konstantinidis A. The influence of sex hormones on proinflammatory cytokines in gingiva of periodontally healthy premenopausal women. *J Periodontol Res*. 2011 Oct;46(5):528–32.
52. Žemaitienė M, Grigalauskiene R, Vasiliauskienė I, Saldūnaitė K, Razmienė J, Slabšinskienė E. Prevalence and severity of dental caries among 18-year-old Lithuanian adolescents. *Medicina*. 2016 Jan 29;52(1):54–60.
53. Lukacs JR. Sex differences in dental caries experience: clinical evidence, complex etiology. *Clin Oral Investig*. 2011 Oct;15(5):649–56.
54. Vijayashree Priyadharsini J. In silico validation of the non-antibiotic drugs acetaminophen and ibuprofen as antibacterial agents against red complex pathogens. *J Periodontol*. 2019 Dec;90(12):1441–8.
55. Ramesh A, Varghese S, Jayakumar ND, Malaiappan S. Comparative estimation of sulfiredoxin levels between chronic periodontitis and healthy patients - A case-control study. *J Periodontol*. 2018 Oct;89(10):1241–8.
56. Mathew MG, Samuel SR, Soni AJ, Roopa KB. Evaluation of adhesion of Streptococcus mutans, plaque accumulation on zirconia and stainless steel crowns, and surrounding gingival inflammation in primary .... *Clin Oral Investig* [Internet]. 2020; Available from: <https://link.springer.com/article/10.1007/s00784-020-03204-9>
57. Sridharan G, Ramani P, Patankar S, Vijayaraghavan R. Evaluation of salivary metabolomics in oral leukoplakia and oral squamous cell carcinoma. *J Oral Pathol Med*. 2019 Apr;48(4):299–306.
58. Pc J, Marimuthu T, Devadoss P. Prevalence and measurement of anterior loop of the mandibular canal using CBCT: A cross sectional study. *Clin Implant Dent Relat Res* [Internet]. 2018; Available from: <https://europepmc.org/article/med/29624863>
59. Ramadurai N, Gurunathan D, Samuel AV, Subramanian E, Rodrigues SJL. Effectiveness of 2% Articaine as an anesthetic agent in children: randomized controlled trial. *Clin Oral Investig*. 2019 Sep;23(9):3543–50.
60. Gupta AK, Ayoob S. Fluoride in Drinking Water: Status, Issues, and Solutions. CRC Press; 2016. 210 p.
61. 16. Ravi S, Malaiappan S, Varghese S, Jayakumar ND, Prakasam G. Additive Effect of Plasma Rich in Growth Factors With Guided Tissue Regeneration in Treatment of Intrabony Defects in Patients With Chronic Periodontitis: A Split-Mouth Randomized Controlled Clinical Trial [Internet]. Vol. 88, Journal of Periodontology. 2017. p. 839–45. Available from: <http://dx.doi.org/10.1902/jop.2017.160824>